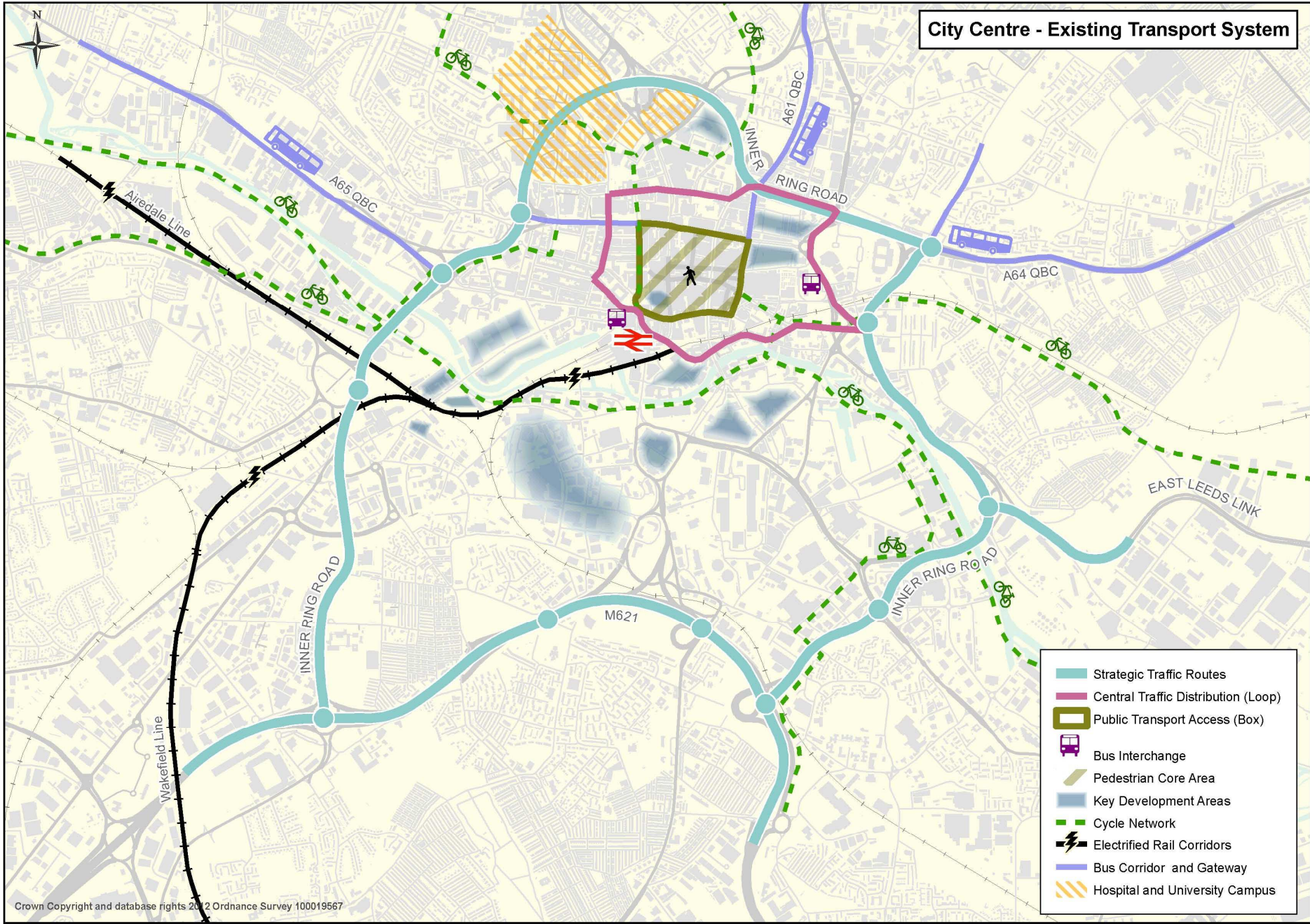




Emerging City Centre Transport Strategy

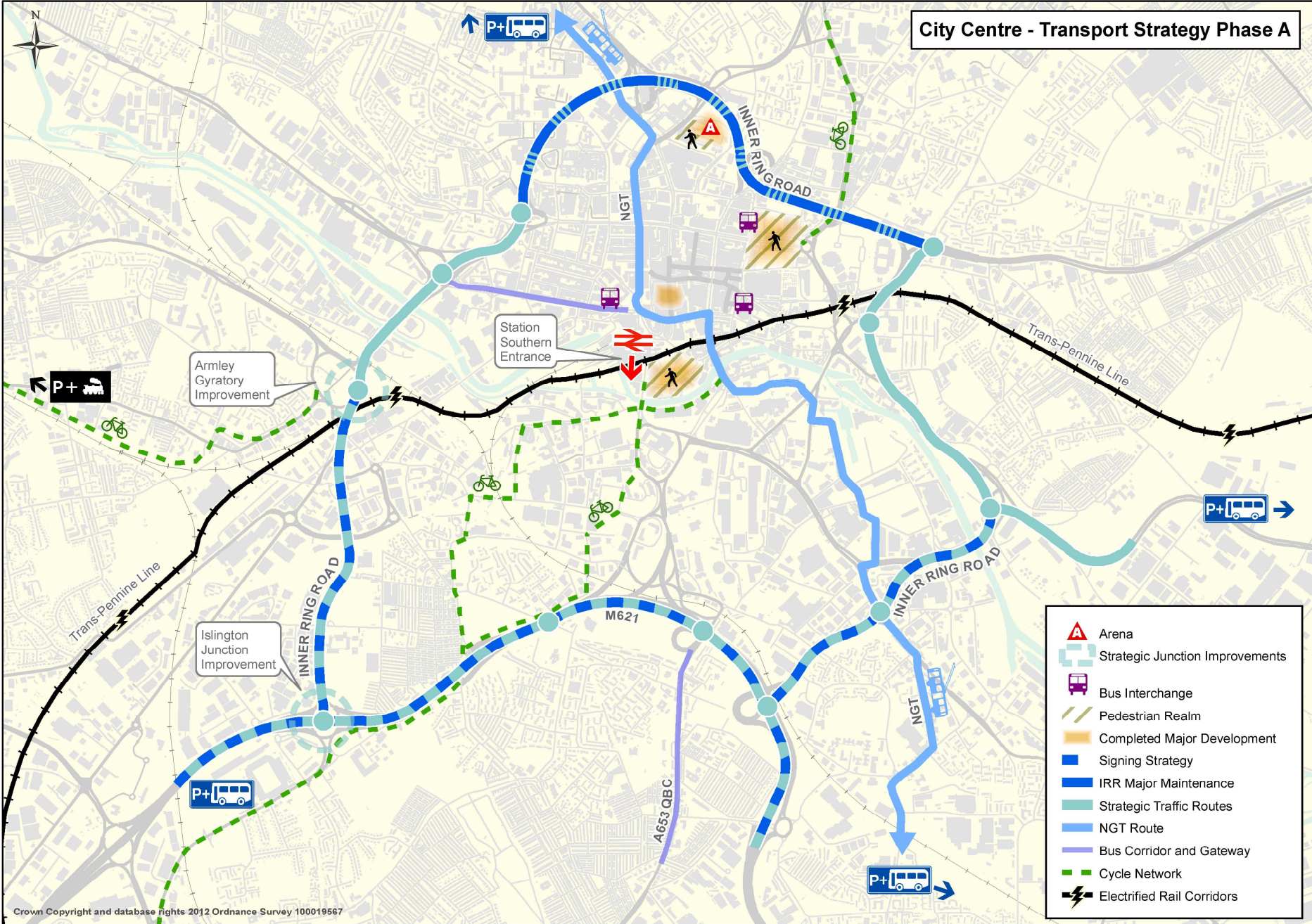


City Centre - Existing Transport System



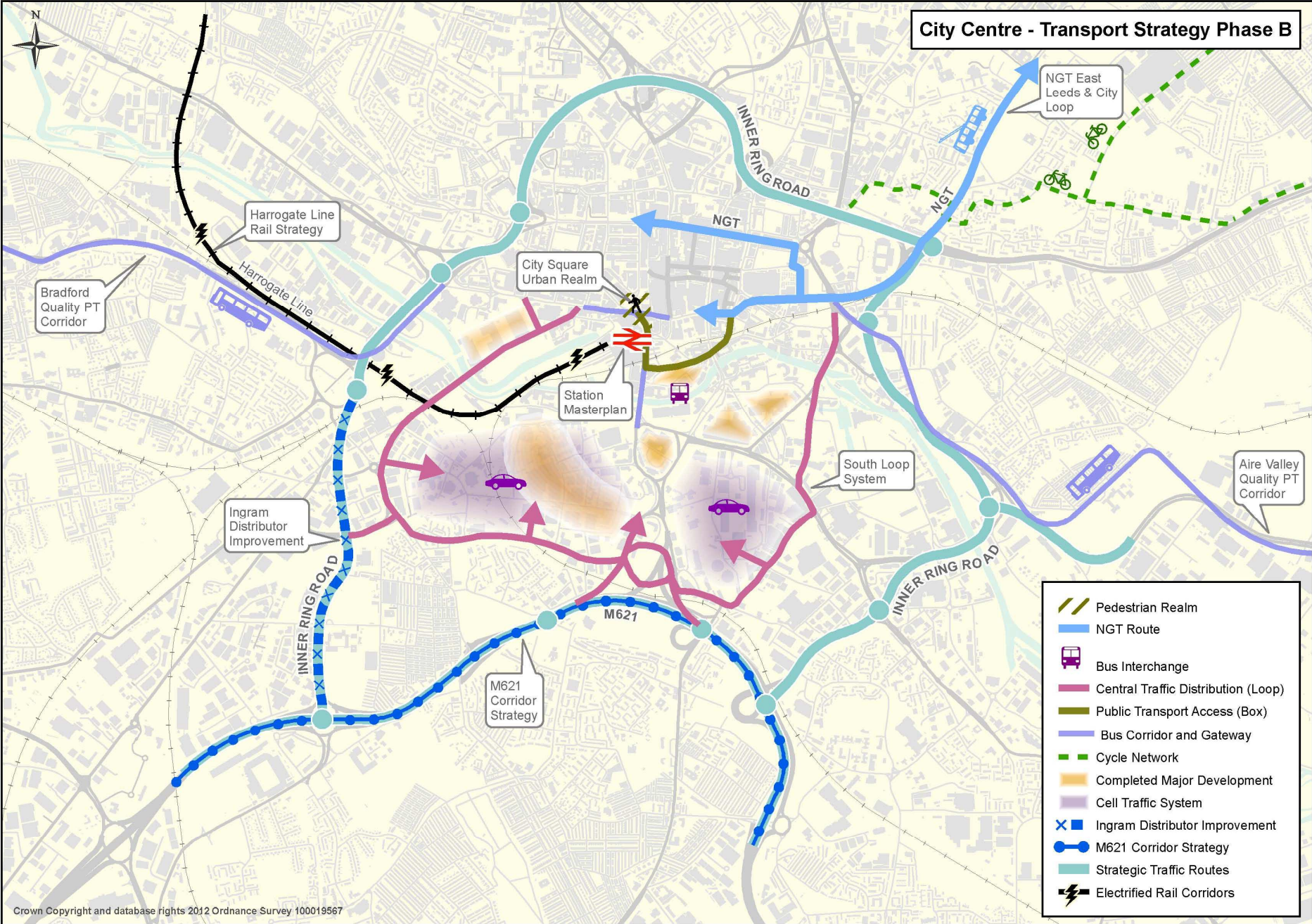
- Strategic Traffic Routes
- Central Traffic Distribution (Loop)
- Public Transport Access (Box)
- Bus Interchange
- Pedestrian Core Area
- Key Development Areas
- - - Cycle Network
- - - Electrified Rail Corridors
- Bus Corridor and Gateway
- Hospital and University Campus

City Centre - Transport Strategy Phase A



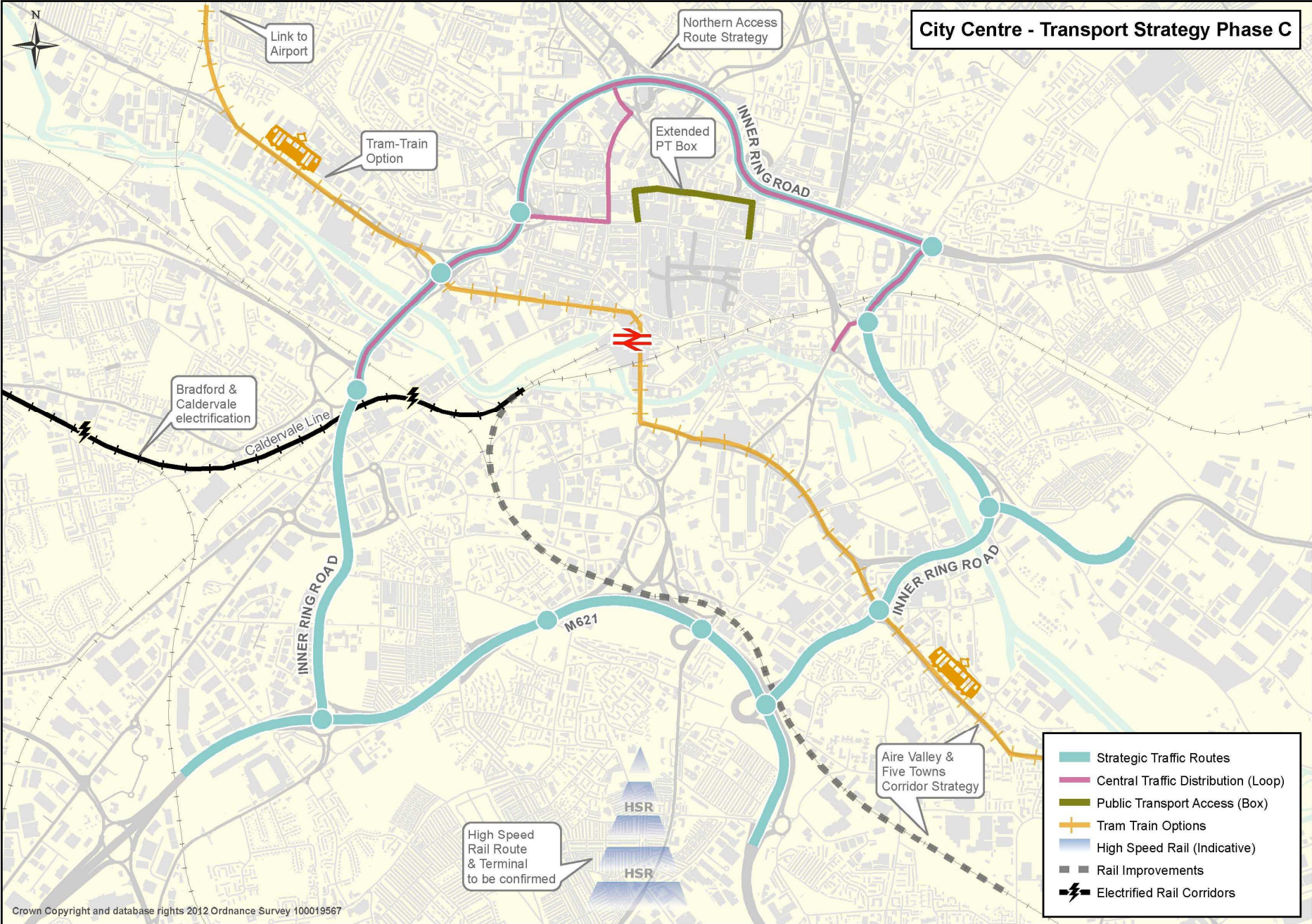
- Arena
- Strategic Junction Improvements
- Bus Interchange
- Pedestrian Realm
- Completed Major Development
- Signing Strategy
- IRR Major Maintenance
- Strategic Traffic Routes
- NGT Route
- Bus Corridor and Gateway
- Cycle Network
- Electrified Rail Corridors

City Centre - Transport Strategy Phase B

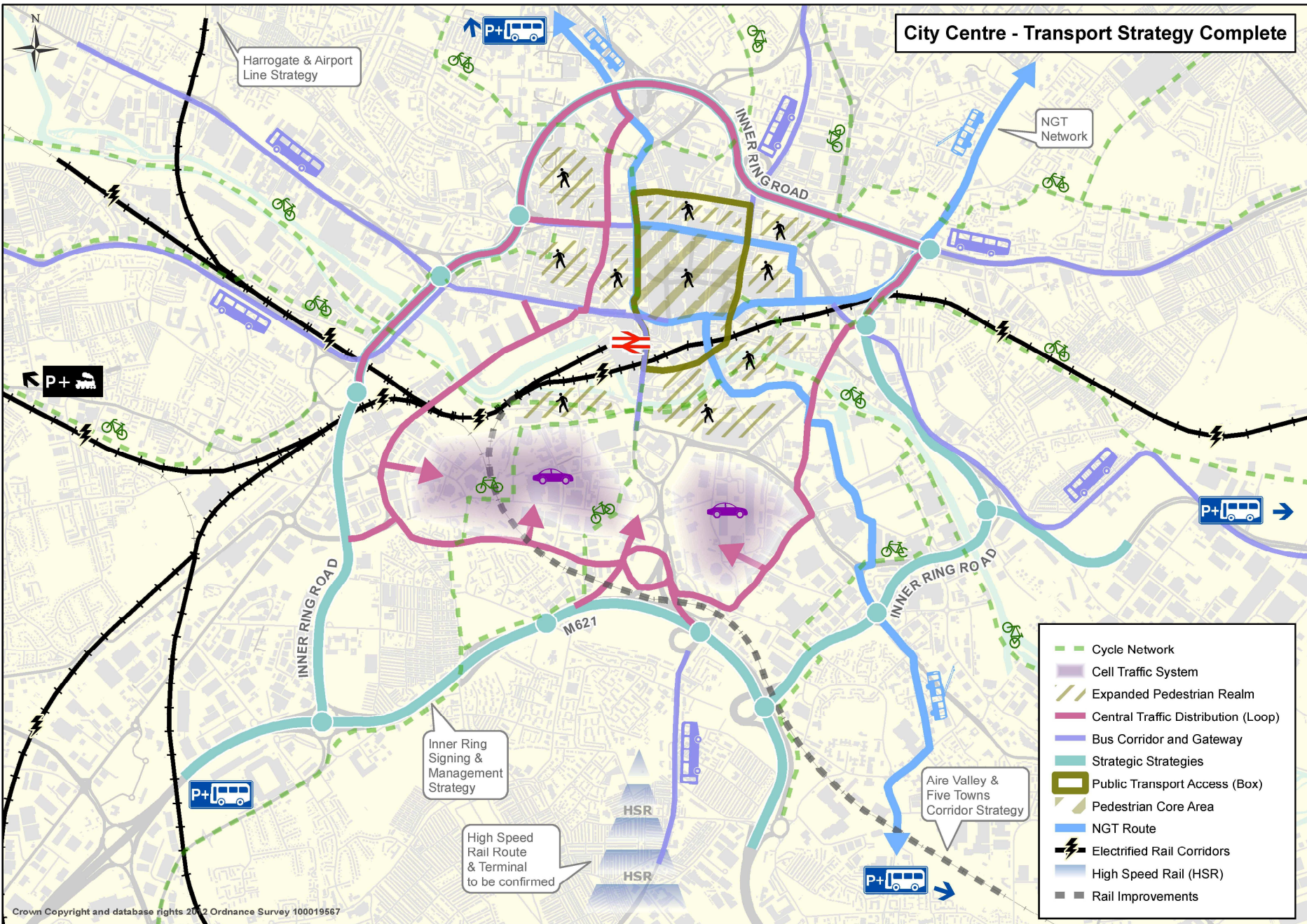


- Pedestrian Realm
- NGT Route
- Bus Interchange
- Central Traffic Distribution (Loop)
- Public Transport Access (Box)
- Bus Corridor and Gateway
- Cycle Network
- Completed Major Development
- Cell Traffic System
- Ingram Distributor Improvement
- M621 Corridor Strategy
- Strategic Traffic Routes
- Electrified Rail Corridors

City Centre - Transport Strategy Phase C



City Centre - Transport Strategy Complete



- Cycle Network
- Cell Traffic System
- Expanded Pedestrian Realm
- Central Traffic Distribution (Loop)
- Bus Corridor and Gateway
- Strategic Strategies
- Public Transport Access (Box)
- Pedestrian Core Area
- NGT Route
- Electrified Rail Corridors
- High Speed Rail (HSR)
- Rail Improvements